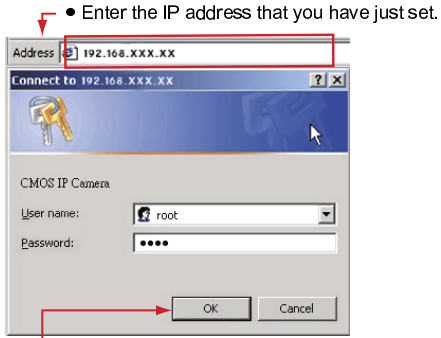


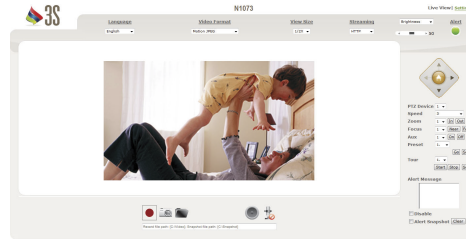
## Step4 Enter the Main Page

- 1 Start**  
Open a new Internet Explorer window.
- 2 Enter the IP address and login**  
Enter the new IP address and key in the username "root" and password "root".



- When the login screen appears, key in root in the User Name and Password fields. Click OK.

- 3 Enter the control screen**  
You can enter the control screen when the username and password are confirmed.



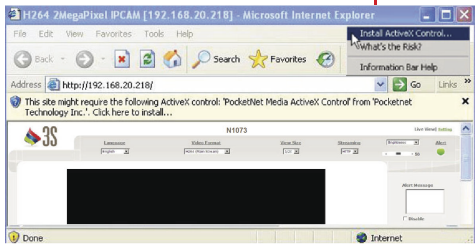
## Quick Guide

### N1073 Box Network Camera

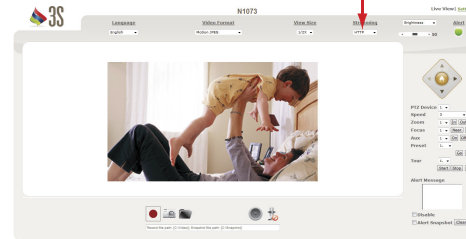
## Step5 Install Internet Explorer Active X Controller

- 1 Install ActiveX**  
When the username and password are confirmed, a control setup screen pops up under the IE address bar. Click "Install ActiveX Control" to install the controls.

- Click Install ActiveX Control



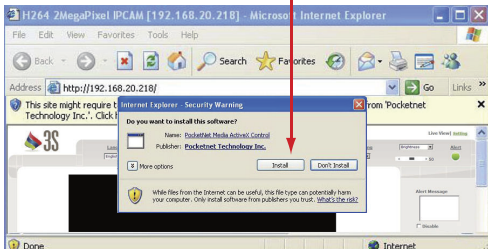
- 3 Camera operation and interface**  
When ActiveX Control is installed successfully, you can see the camera image and interface.
  - Select the HTTP mode if the image is disabled.



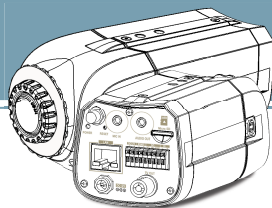
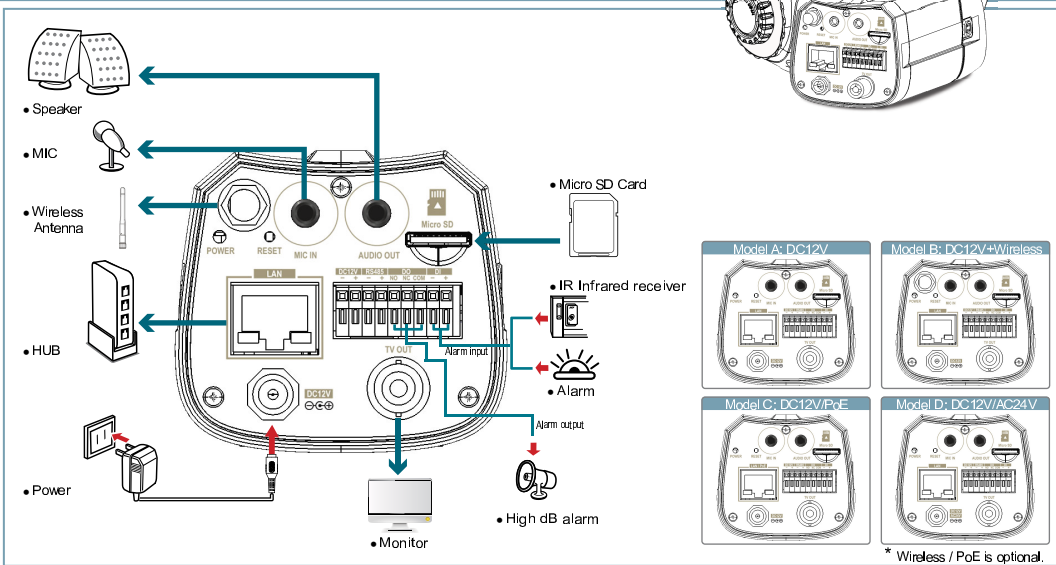
- 2 The security warning screen appears. Click Install.**

The ActiveX Control is named ActiveX Control. This software is well certified. You can use it without any doubts on its validity.

- Click Install



# Connection diagram

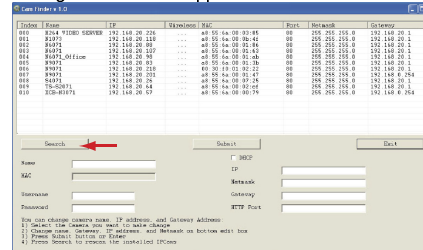


## Step 2 Camera settings

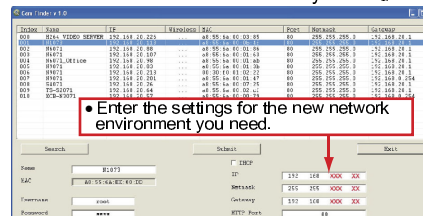
- 1 Start**  
Execute the *Cam Finder.exe* file from the supplied CD.



- 2 Find the camera (Search)**  
Search for the product from your LAN. The default IP setting **192.168.0.20** appears on the screen.

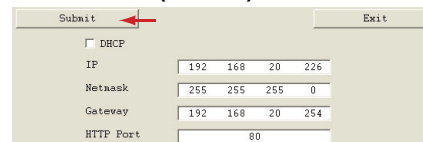


- 3 Click Search to find the IP CAM on the LAN.**
- 3 Click the IP address and related settings for the network environment**  
When you find the camera, click it and the settings appear on the right side. You can change the settings for the new network environment as you need.



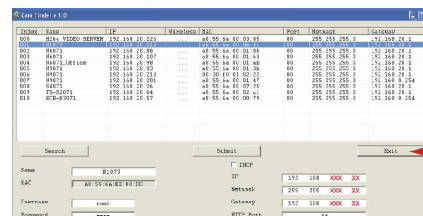
- Enter the settings for the new network environment you need.
- You have to enter a new settings in the IP Netmask and Gateway fields and keep the settings in other fields unchanged.

- 4 Submit data (Submit)**



- Click **Submit** to apply the new settings.

- 5 Confirmation**



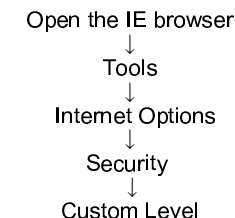
- Click **Exit** to quit, after all changes have been confirmed.

**Note:**  
If this software cannot run successfully, check that it is not blocked by an anti-virus software or firewall.

## Step 3 Change the Internet Explorer settings

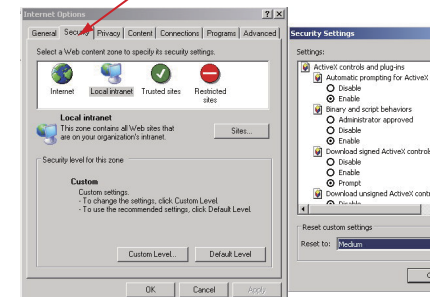
- 1 Start**  
Bring Up Your IE browser.
- 2 Check**  
Make sure that Level II, the commonly used default security level, is set for the security.

### Steps



- 3 Select "medium" for security**  
Make sure that Level II, the commonly used default security level, is set for the security.

- Check that the security level is Level II.



Note: This product supports IE 6.0 or above.

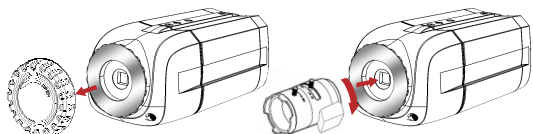
- 4 OK**  
Click **OK** to quit.

### Attention

- Please refer to user manual for more detailed explanation of the hardware installation.
- Where no switch hub is available, you can search and set up the camera using the network peering approach. However, you may need a jumper and need to change the LAN configuration on your PC for this purpose. It is recommended to request a qualified engineer for the connection or execute the network peering referring to the user's manual.

## Step 1 Connect the product to the switch hub and analog camera

- 1 Connect lens as shown**  
Remove the cover of sensor and connect the lens by screwing it into the camera clockwise.

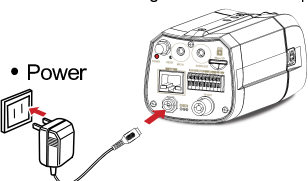


- Lock the lens after lens connected by keeping screwing. It will be idle running if the lens is locked.

**NOTE:**  
Use the hexagonal wrench to release the lens ring and adjust the lens, if there is any unfitted condition occurred after the lens is connected.

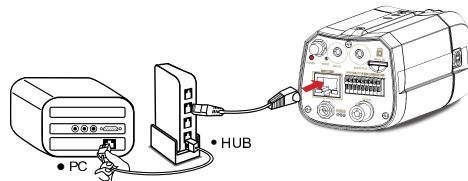


- 2 Connect to the power outlet**  
Connect to a power outlet using the supplied power cable after connecting the lens.  
The Power Led Indicator will light in red when the power on.

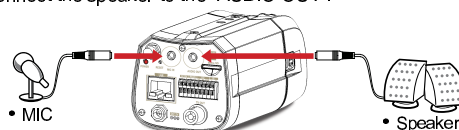


\* The product can operate on DC12V, DC12V/PoE and DC12V/AC24V based on the model you buy.

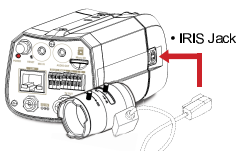
- 3 Connect the switch hub to your PC**  
Use a network cable and plug it in the LAN port of the product. Plug the other end of the cable in the LAN port of the hub.



- 4 Connect to microphone and speaker**  
Connect the microphone with 3.5mm phone jack into the "MIC IN".  
Connect the speaker to the "AUDIO OUT".



- 5 Connect to IRIS**  
Please connect the lens cable plug to the IRIS Jack.



- 6 Connect all the external I/O setting**  
\* For further details, please refer to user manual in the attached CD.

- 7 Turn on the power.**  
Turn on the power of the PC and hub.